

The Hillandale Bulletin

October 2015

See us at: <http://www.hillandale-md.org/> Contact the Editor at: newsletter@hillandale-md.org

Published by the Hillandale Citizens Association, Inc.

Ross Sutton, Editor

Hillandale Citizens General Meeting Wednesday, Oct 28, 7:30-9:00 PM Refreshments at 7:15 PM CHI Centers, 10501 New Hampshire Avenue

Please bring your friends, family and neighbors to the October Hillandale Citizens Association general meeting. Meet the new HCA board members and hear from the evening's speaker. One of the HCA goals for this year is to strengthen our community.

Update: The Amalgamated Transit Union



As the new owner of the National Labor College property, the Amalgamated Transit Union has renamed the facility as The Tommy Douglas Conference Center. Further, since the 46-acre property was recently rezoned through the White Oak Science Gateway Master Plan, the union

requested and was granted termination of the Special Exception that guided the property's use and development for over 40 years.

In requesting the change, ATU stated that their intent is to run the facility as a non-profit training, education and conference center and noted that hotel, office and private residence uses are also permitted under the new zoning category. There was a specific reference to the undeveloped portion of the back of property adjacent to Hillandale Heights as being a potential site for installation of solar panel arrays. Any future development of the property would be subject to Site Plan Approval by the Montgomery County Planning Board in accordance with the zoning code and WOSG Master Plan.

For more on the ATU, see their web site at:
<http://www.atu.org/>

MoCo and PG "Call 311 to Get It Done"

Both of our county jurisdictions have embraced the #311 system to streamline questions, complaints and services for residents. However, Hillandalers need to know that each county's 311 is different, and may require you to dial more than 311. Both counties have web sites that provide the same services as a phone call too.

For Montgomery County call: 240-777-0311

<http://www3.montgomerycountymd.gov/311/Home.aspx>

For Prince George's County call: 301-883-4748

<http://countyclick.princegeorgescountymd.gov/>

These handy customer service offices provide information ranging from how to get replacement recycling bins to handling neighborhood complaints and bus schedules. **Please note that 311 is not for police calls or reports for suspicious activities.**

Miscellaneous News of Note

Hillandale Forest road resurfacing: MoCo neighborhood streets have been scheduled for resurfacing in FY17 (July 2016-June 2017). Powder Mill Road is not scheduled.

"Viva White Oak!" The LifeSci Village development project being planned by MoCo and Percontee for the 300-acre site of the old WSSC Site 2 and the quarry/concrete facility on Cherry Hill Road is now "Viva White Oak!"

Independent Transit Agency: It is anticipated that County Executive Leggett will decide to endorse the ITA and request legislation, or not, very soon. Recently his 2015 Task Force recommended this new stand-alone entity to build and operate a \$2.3B BRT system comprised of the CCT, and BRT routes on Rt 355, Viers Mill Road and Rt 29. The proposal includes a new property tax of 7¢ per \$100/assessed value (outside of the Charter Limit) for all property owners. This is a controversial proposal that requires action by the Maryland General Assembly and subsequent action by Council. Stay Tuned!

Arrest for "theft from vehicles:" MoCo Police arrested two 19-year-old men in the act following a call from a resident during the early morning hours of October 12. GOOD JOB and Many Thanks to 3D! One man lives on Castle Blvd and the other on Lockwood Drive.

Please Lock UP...your home, your shed and your cars.

Hillandale Citizens Association
10202 Lariston Lane
Silver Spring, MD 20903

Pre-sorted STD
US Postage
PAID
Suburban, MD
Permit No. 2116

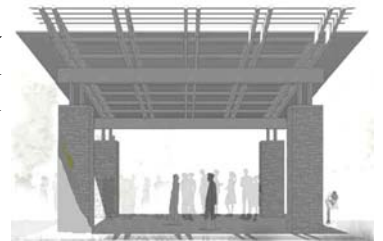
Hillandale Local Park: Now, Near Term, & Future

~~ Eileen Finnegan

There's real positive news about our park! With new improvements happening and future plans coming forward for funding approval, our park is finally getting the attention needed for many years!

NOW: If you are unaware, the Parks Department improved on the old footpath connecting the old Hillandale neighborhood to the play area. It is now a wonderful natural surface trail. A wooden bridge crossing one of the deep stormwater gullies feeding the stream makes the trail a treat. Seeing the stream also provides a glimpse of the neighborhood before piping of the stream along Edgewater. To use the trail, walk directly west from the Greenacres/Edgewater intersection to the wooden post. Then on to the "blue blaze" trail!

NEAR TERM: The old green recreation building was demolished this spring, and a new picnic pavilion is planned for the same location. Construction has begun and will take 6-8 weeks. The pavilion will have grills, five picnic tables and a water fountain when completed. The design includes stone covered pillars and a modern roof cover. The pavilion will be retained as an amenity in the redesigned park.



FUTURE: After years of talk and meetings, the Park and Planning Commission approved plans for a full renovation of our park. The plan includes reconfiguring the entrance at Chalmers, demolition of the Park Office Building, a new and very exciting play area, an exercise trail, and a new elevation along New Hampshire Ave. Tennis, basketball and a multi-purpose play field are prominent in the new design. The big addition to the park, which has been long sought by the community, is a public restroom facility. For a glimpse of the site plan, see: http://montgomeryparks.org/pdd/cip/documents/renderings_combined.pdf

The future Hillandale Park is not cheap and depends on funding approvals in the coming months. The Parks Department's proposed schedule of work has the final planning being completed in FY17-18 with construction happening in FY 19-21. Park and Planning Bonds augmented with Maryland State funds are required to bring the \$7.6M project to completion. Earlier in October, the Commission included Hillandale in their approved FY17-22 Biennial Capital Improvement Program. The County Executive will now review all the Commission projects with all CIP projects countywide. The Executive will present his recommended Biennial CIP to Council in January. Council will then hold hearings and take final action on the project in the spring. Support for approval will be necessary with the Executive and Council. And, money from the State will be needed too. Hopefully, and with the support of Hillandale residents, this project will garner approval and funding necessary.