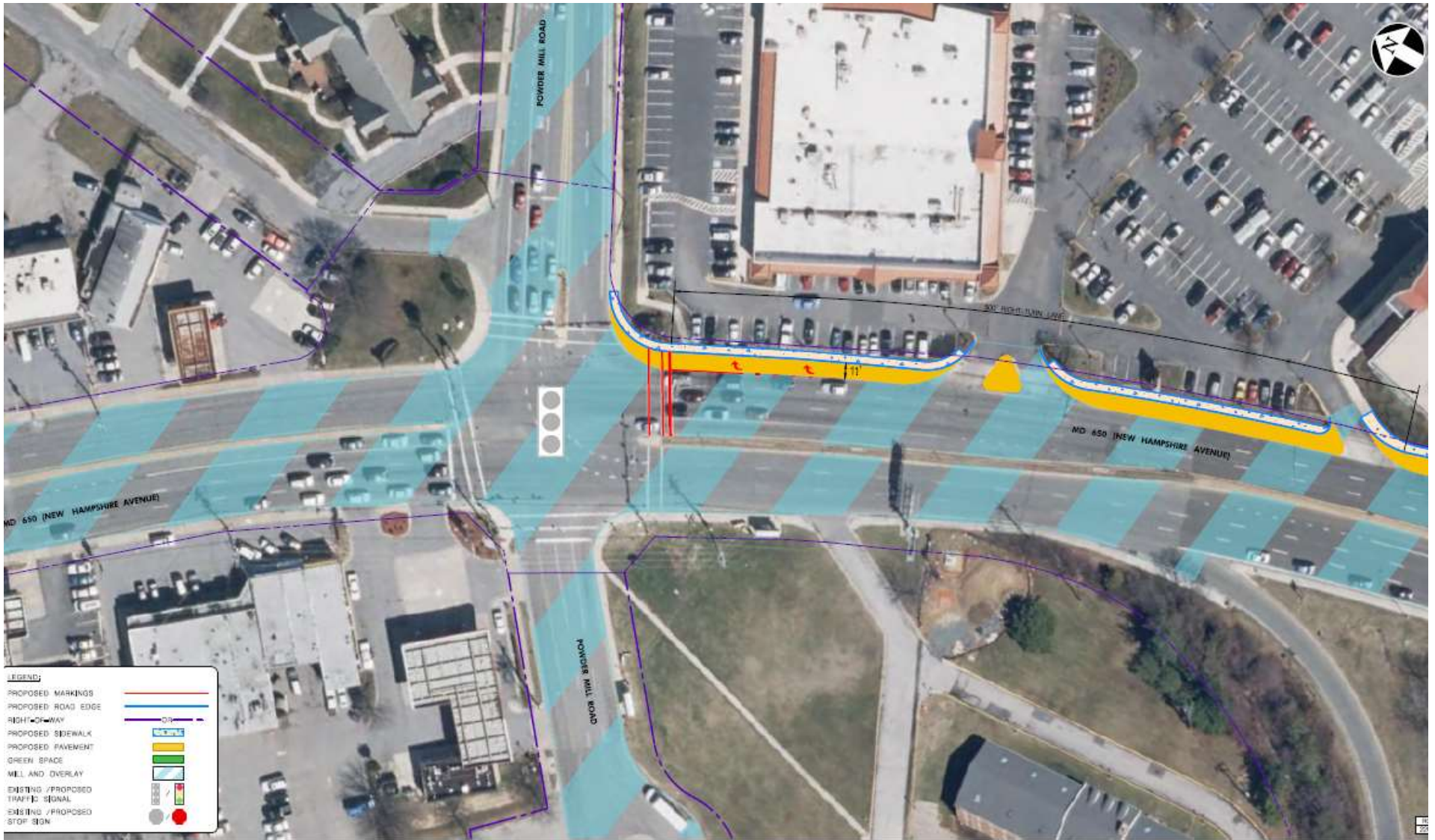


2017 Sabre Wang Concept for 2040 NH and PM Road

One northbound turn lane added



2013 HCM Analysis by Sabre Wang
Figure 40 Alternative Master Plan with Supplemental Intersection
Improvement New Hampshire Ave and Powder Mill Road

Note: 20% above capacity and did not include R-O-W for cycle track or NH BRT



2013 Sabre Wang HCM Study

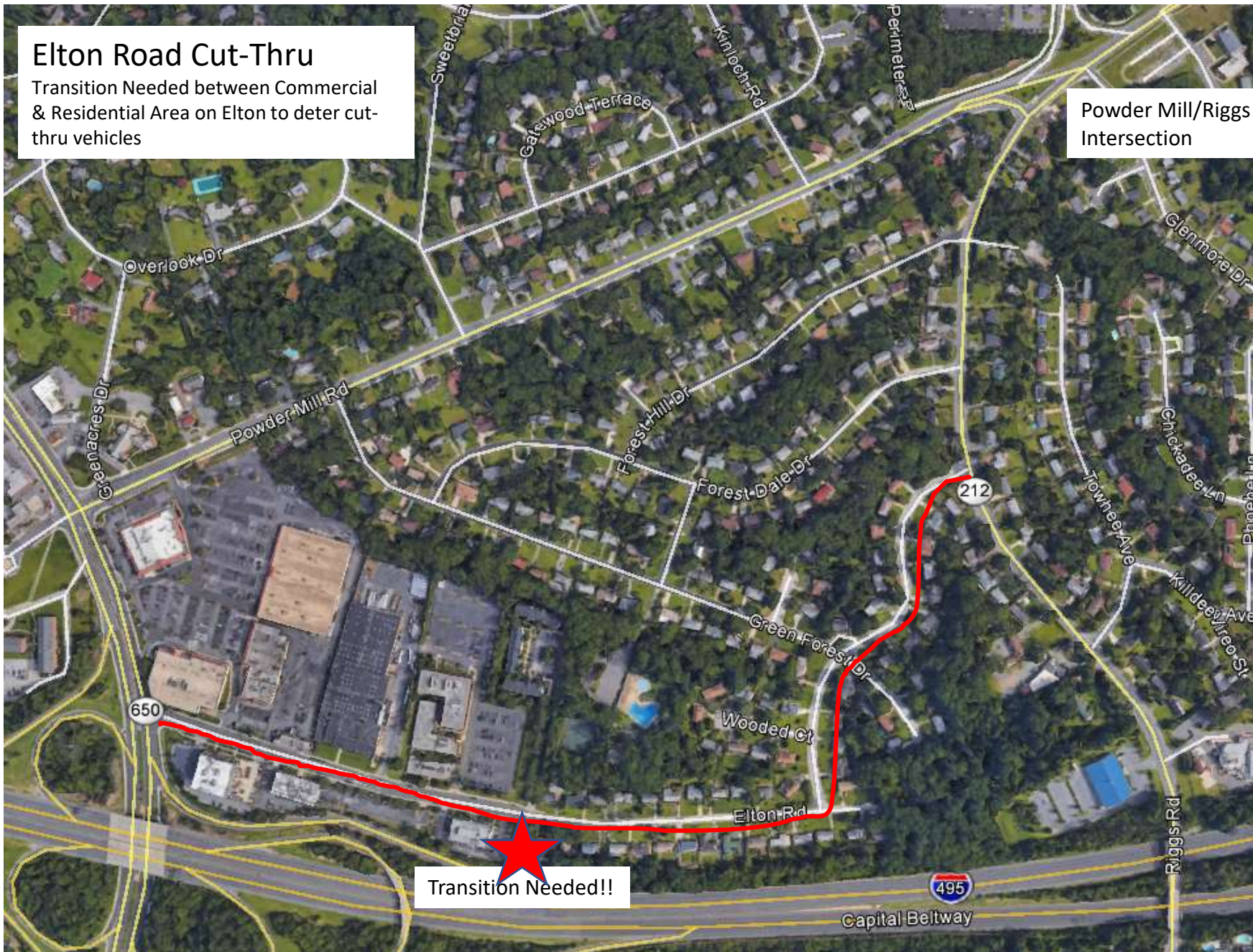
Figure 43 Alternative Master Plan with Supplemental Intersection Improvement Powder Mill Road and Riggs Road



Elton Road Cut-Thru

Transition Needed between Commercial & Residential Area on Elton to deter cut-thru vehicles

Powder Mill/Riggs Intersection



Transition Needed!!

Capital Beltway